

4 - H DAIRY CLUBS

CLASSES		
Novice Showmanship	Champion Showmanship	Junior Yearling-Holstein
Junior Showmanship	Junior Calf-Holstein	Summer Yearling-Holstein
Intermediate Showmanship	Intermediate Calf-Holstein	All Other Dairy Breeds
Senior Showmanship	Senior Calf-Holstein	Champion Calf

SPECIAL AWARDS TO ALL DAIRY MEMBERS

RANDY DOWSON'S WATER HAULAGE

\$50.00 to the Champion Showman
\$30.00 to the Reserve Champion Showman in each club.

PORT PERRY AGRICULTURAL SOCIETY

Will supply rosette ribbons to the Champion and Reserve Champion Showpersons and Champion and Reserve Champion Heifers.

DURHAM. REGION MILK COMMITTEE

Will present an award each first year member at Awards Night.

ONTARIO COUNTY HOLSTEIN CLUB

\$15.00 to each member completing their project with a Holstein Calf.

SOUTH RIDGE 4 - H DAIRY CLUB

Club Leaders: Eldon Werry, Tim O'Connor, Shawn Parrish

SPECIAL AWARDS

O'CONNOR LAND & CATTLE COMPANY

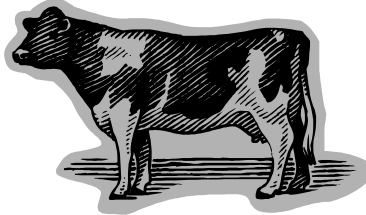
Annual award to the member showing the Champion Dairy Calf.

CANADIAN IMPERIAL BANK OF COMMERCE, OSHAWA

To the Champion Showperson.

WERRHURST FARMS

Highest scoring member in this year's work



PORT PERRY 4-H DAIRY CLUB

Club Leaders: Carl Phoenix, Jessica Phoenix, Robert Smith

SPECIAL AWARDS

CANADIAN IMPERIAL BANK OF COMMERCE, PORT PERRY

To the Champion Showperson.

HIGH POINT FARMS

Annual award to the member showing the champion calf.

PORT PERRY VETERINARY SERVICES

A cash award to the four members with the highest scores in their year's work.

4-H BEEF SHOW

Durham. West 4-H Beef Leaders: Eric Rincker, Kevin Gillham.

CLASSES		
Novice Showmanship	Senior Showmanship	Junior Heifer – all breeds
Junior Showmanship	Champion Showmanship	Senior Heifer – all breeds
Intermediate Showmanship	Steer	Champion Heifer

SPECIAL AWARDS

RANDY DOWSON'S WATER HAULAGE

\$50.00 to the Champion Showman and \$30.00 to the Reserve Champion Showman

BOB AND STEVE TAYLOR

Cash award to each member

PORT PERRY AGRICULTURAL SOCIETY

Will supply rosette ribbons to the Champion and Reserve Champion Showpersons and Champion and Reserve Champion Heifers and Steer



4 - H EDUCATIONAL EXHIBITS

RULES AND REGULATIONS

1. Open to all 4-H clubs in the Durham West 4-H Association area.
2. Exhibits are to be on a topic from one of the 4-H projects offered in the fall of 2004 or winter or summer of 2007.
3. Exhibits should include a poster stating the title of the exhibit and the club name.
4. Space allotted for each exhibit will be a maximum of 1 m x 1 m.
5. Exhibits will be set up Saturday of Labour Day Weekend between 9:00 a.m. and 11:00 a.m. and are to be removed at 5:30 p.m. on the Monday. The Fair Board will not be responsible for exhibits not picked up.
6. No entry fee is required.
7. Entry shall be made to Kim Sargent, Secretary, Port Perry Agricultural Society, Box 401, Port Perry, Ontario L9L 1A4. (905) 985-0962.
8. **\$20.00 will be paid to each club exhibiting a worthy entry. To receive the prize money, all exhibits must remain during the entire Fair.**
9. **Exhibitors must complete an entry form which clearly shows who to make the cheque payable to.**